



**AD 200 PORTABLE ADSORPTION**

**Function**

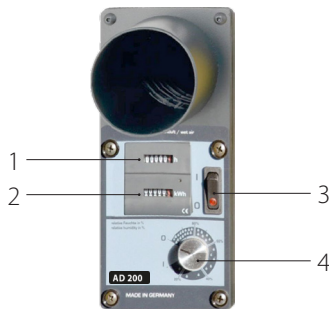
The AD 200 is a robust compact adsorption dehumidifier with a silica gel rotor as standard. Process air is drawn into the dehumidifier and through the rotor, which slowly turns between two sections in the dehumidifier. The silica gel rotor adsorbs the moisture from the air in the drying section. This moisture is removed again by blowing hot air through the rotor in the regeneration section. The process air leaves the dehumidifier as dry air and the moisture is led out of the room through the regenerated air outlet.

**Applications**

- Water damage restoration
- Building drying
- Industrial processes
- Room dehumidification
- Water works and pump stations

**FEATURES**

- MID approved energy counter
- Hour counter
- Internal humidistat
- One common fan for process air and regeneration air
- Cabinet in stainless steel / hot galvanized powder coated steel
- Low weight
- PTC regeneration heater
- Robust and compact metal construction
- Carrying handle
- Easy internal access for service and maintenance
- Four rubber bumpers to fix the unit in place
- Flexible dry air outlet

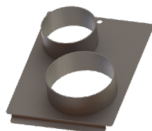


**CONTROL**

- 1 - Hour counter
- 2 - Energy counter
- 3 - ON/OFF button
- 4 - Internal humidistat

**ACCESSORIES**

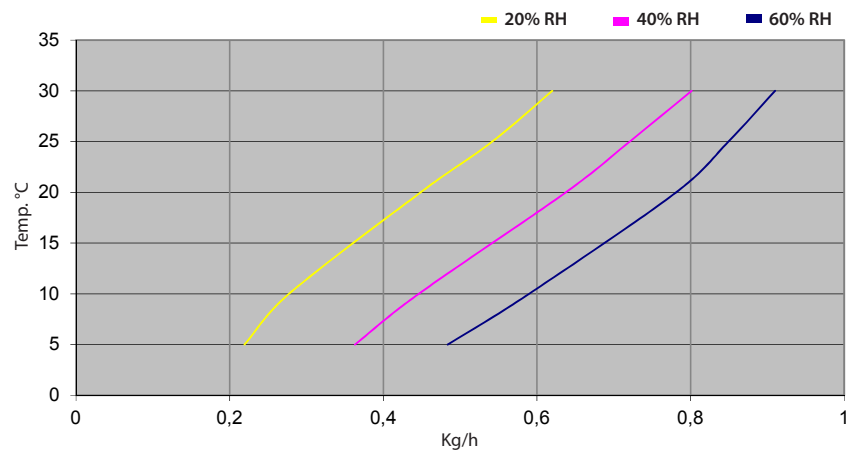
Replacement filters, 10 pcs.  
Frontplate



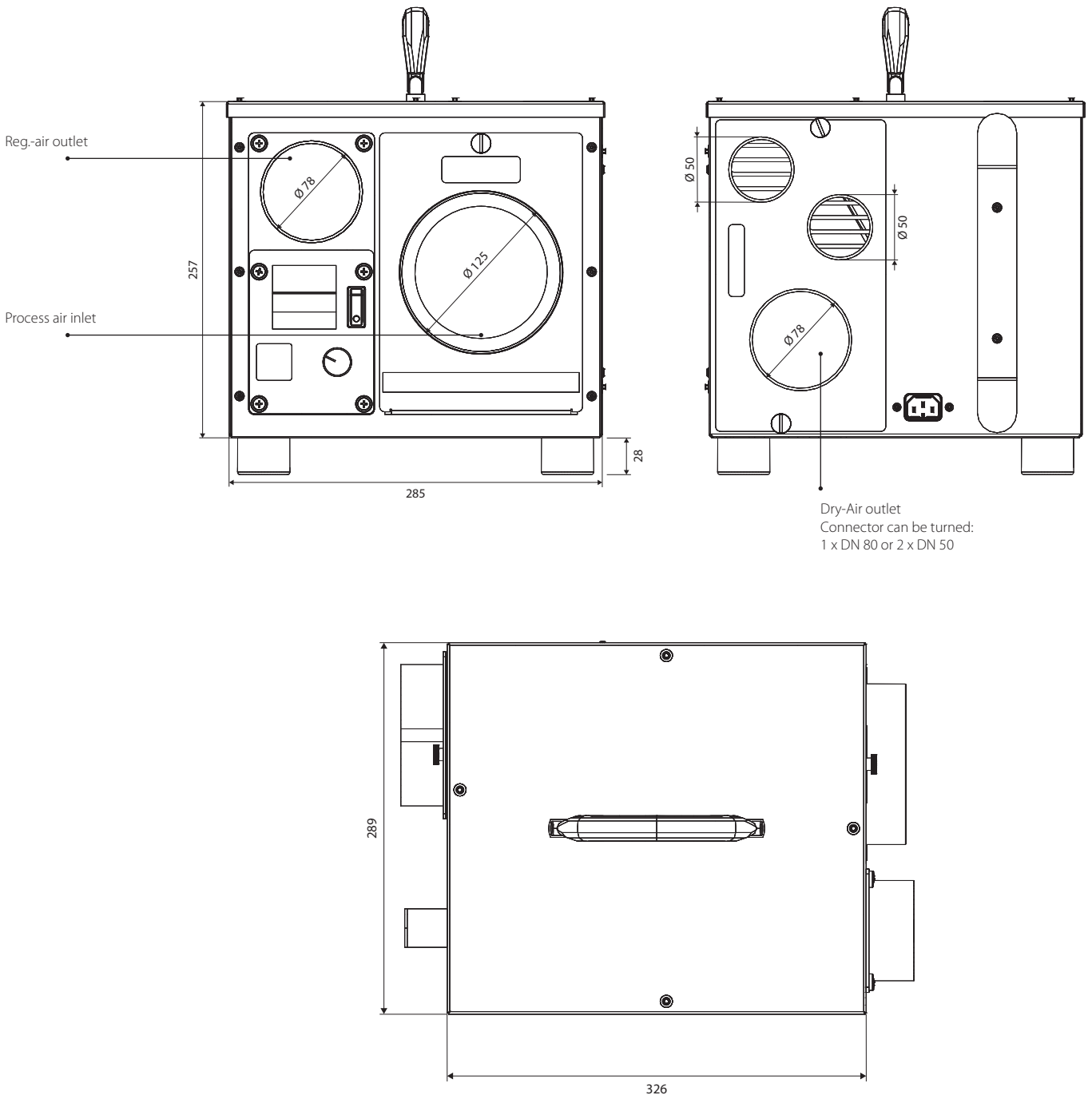
**TECHNICAL DATA**

Model	AD 200
Operating range – humidity	0-100 % RH
Operating range – temperature	-10°C to +35°C
Dehumidification capacity at 20°C/RH 60	18,75 kg/24 h
Nominal air volume, dry air	210 m <sup>3</sup> /h
Nominal air volume, reg air	110 m <sup>3</sup> /h
External pressure, dry air	150 Pa
External pressure, reg air	50 Pa
Power supply - 4,5 m with plug	230V/50 Hz
Power consumption	0,694 kW
Sound level (1 m distance)	57 db(A)
Protection Class	IP 23
Colors	RAL 7044/7021
Weight, net	14 kg
Process air inlet	Ø 125 mm
Dry air outlet	1 x Ø 80 or 2 x Ø 50
Reg air outlet	Ø 80 mm

**CAPACITY CURVES**



**DIMENSIONS**



**Also available in this series:**  
AD 300  
(see separate data sheets)

All dimensions are in mm.



### AD 300 PORTABLE ADSORPTION

#### Function

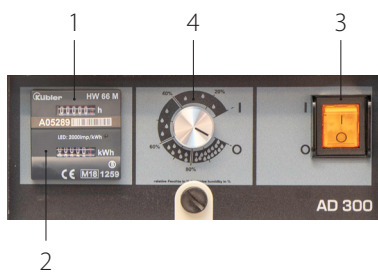
The AD 300 is a robust compact adsorption dehumidifier with a silica gel rotor as standard. Process air is drawn into the dehumidifier and through the rotor, which slowly turns between two sections in the dehumidifier. The silica gel rotor adsorbs the moisture from the air in the drying section. This moisture is removed again by blowing hot air through the rotor in the regeneration section. The process air leaves the dehumidifier as dry air and the moisture is led out of the room through the regenerated air outlet.

#### Applications

- Water damage restoration
- Building drying
- Industrial processes
- Room dehumidification
- Water works and pump stations

### FEATURES

- MID approved energy counter
- Hour counter
- One common fan for process air and regeneration air
- Cabinet in stainless steel / hot galvanized powder coated steel
- Low weight
- PTC regeneration heater
- Robust and compact metal construction
- Carrying handle
- Easy internal access for service and maintenance
- Four rubber bumpers to fix the unit in place
- Internal humidistat
- Flexible dry air outlet

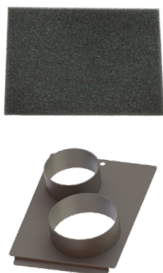


### CONTROL

- 1 - Hour counter
- 2 - Energy counter
- 3 - ON/OFF button
- 4 - Internal humidistat

### ACCESSORIES

Replacement filters, 10 pcs.  
Frontplate

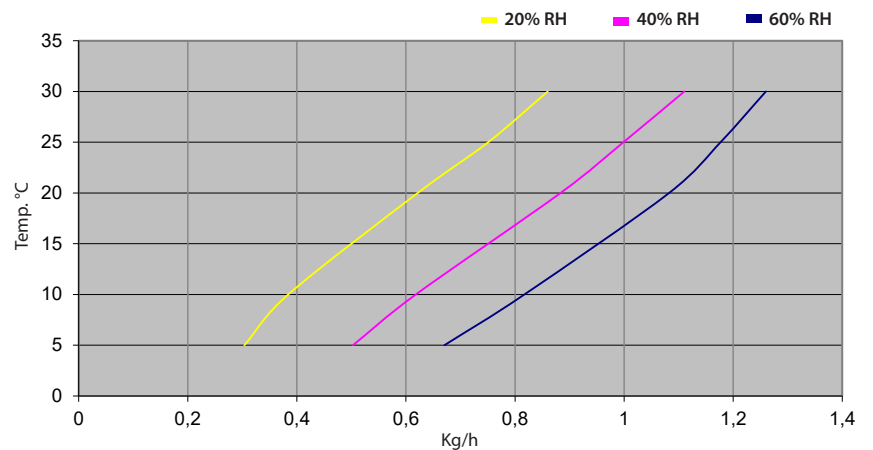


**TECHNICAL DATA**

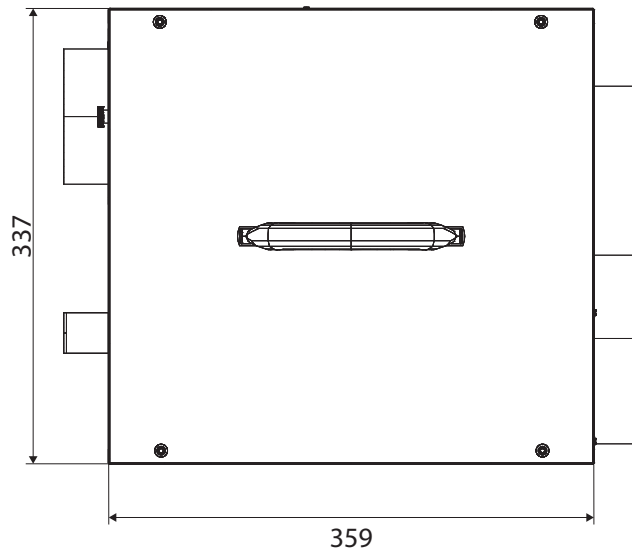
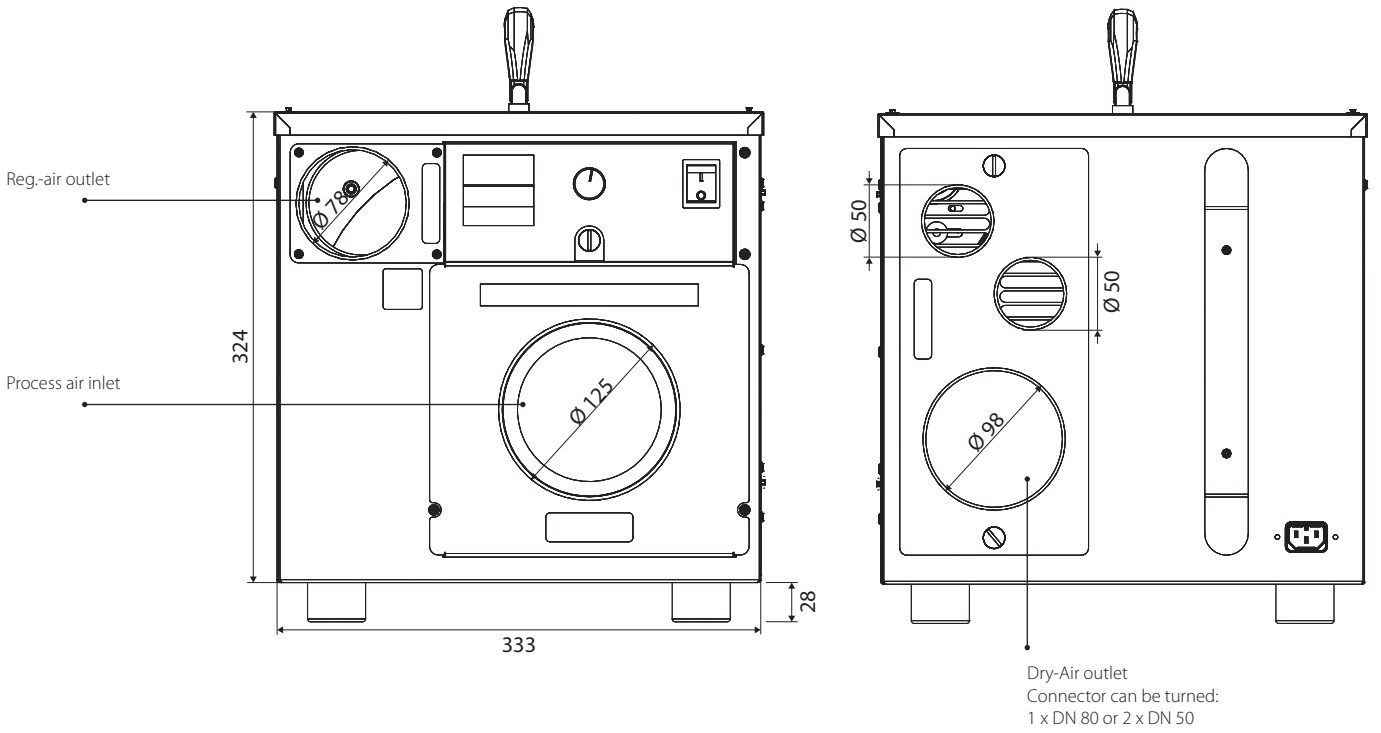
**Model**

Operating range – humidity	<b>AD 300</b> 0 - 100 % RH
Operating range – temperature	-10°C to +35°C
Dehumidification capacity at 20°C/RH 60	25,7 kg/24 h
Nominal air volume, dry air	300 m <sup>3</sup> /h
Nominal air volume, reg air	110 m <sup>3</sup> /h
External pressure, dry air	150 Pa
External pressure, reg air	50 Pa
Power supply - 4,5 m with plug	230 V/50 Hz
Power consumption	1,1 kW
Sound level (1 m distance)	66 db(A)
Protection Class	IP 23
Colors	RAL 7044/7021
Weight, net	18 kg
Process air inlet	Ø 125 mm
Dry air outlet	1 x Ø 100 or 2 x Ø 50
Reg air outlet	Ø 80 mm

**CAPACITY CURVES**



**DIMENSIONS**



**Also available in this series:**  
AD 200  
(see separate data sheets)

All dimensions are in mm.